

### Registration Form

Title:  Prof.  Dr.  Mr.  Ms.

First Name: \_\_\_\_\_ Last Name: \_\_\_\_\_

Position: \_\_\_\_\_

Institution: \_\_\_\_\_

Mailing Address: \_\_\_\_\_

Country: \_\_\_\_\_

Tel: \_\_\_\_\_ Fax: \_\_\_\_\_

Email: \_\_\_\_\_

Registration	Price - Early Bird (Before 15 Oct 10)	Price (After 15 Oct 10)
<input type="checkbox"/> Lecture + Live Demonstration (18-19 December 2010)	HKD 1,000 (USD 128)	HKD 1,200 (USD 154)
<input type="checkbox"/> Lecture + Live Demonstration + Hands-on Workshop (17-19 December 2010)	HKD 6,500 (USD 833)	HKD 7,000 (USD 897)
<input type="checkbox"/> Lecture + Live Demonstration for nurses (18-19 December 2010)	HKD 200 (USD 26)	HKD 200 (USD 26)

### Payment Method

(This part must be completed for acceptance of registration.)

A bankdraft / cheque for USD / HKD \_\_\_\_\_ made payable to "The Chinese University of Hong Kong" is enclosed.  
(Personal cheques are acceptable for HK residents)

Please debit my credit card: Type:  Visa /  Master  
Name: \_\_\_\_\_

Card No.: \_\_\_\_\_

Expiry date: \_\_\_\_\_ Amount: HKD \_\_\_\_\_

CVV No. : \_\_\_\_\_ (The three-digit CVV number is located on the signature panel on the back of the card immediately after the card's account number)

Signature: \_\_\_\_\_ Date (ddmmyyyy): \_\_\_\_\_

### Cancellation & Refund Policy

All cancellations must be made in writing to the secretariat.  
The following refund policy will be observed:  
**Postmarked, faxed or email on or before 4 Dec 2010** - 50% of the amount paid  
**Postmarked, faxed or email after 11 Dec 2010** - No Refund

### SYMPOSIUM CHAIRMAN

Eddie SY CHAN

### CO-CHAIRMAN

Anthony CF NG

### INTERNATIONAL FACULTY

Steven CAMPBELL  
*Cleveland Clinic, USA*

Jian HUANG  
*Sun Yat-sen University, China*

Paolo PUPPO  
*National Institute for Cancer  
Research of Genoa, Italy*

Urs E STUDER  
*University of Bern, Switzerland*

### LOCAL FACULTY

Wing Hang AU  
Chi Kwok CHAN  
Ho Yuen CHEUNG  
Peggy SK CHU  
Ka Lun CHUI  
Berry TC FUNG  
Wing Ming HO  
Simon SM HOU  
Richard KY LO  
Siu King MAK  
Chi Wai MAN  
Po Chor TAM  
Ka Fai TO  
Bill WONG  
Sidney KH YIP

### Venues and Secretariat

#### Symposium Venue (18-19 Dec 2010)

Shaw Auditorium  
Postgraduate Education Centre, Prince of Wales Hospital  
Shatin, Hong Kong

#### Hands-on Workshop Venue (17 Dec 2010) and Secretariat

CUHK Jockey Club Minimally Invasive Surgical Skills Centre (MISSC)  
3/F, Li Ka Shing Specialist Clinic (North Wing)  
Prince of Wales Hospital, Shatin, Hong Kong  
Tel: (852) 2632 2644 Fax: (852) 2632 4708  
Email: info@hkmisc.org.hk Website: www.hkmisc.org.hk

### Hotel Accommodation

Special room rates will be offered to participants at the following hotels:



#### Regal Riverside Hotel

Room type: Superior  
Price per room per night: \$630 + 10%

34-36 Tai Chung Kiu Road  
Shatin, New Territories, Hong Kong  
Tel: (852) 2649 7878  
Fax: (852) 2637 4748  
Email: rrrh.info@RegalHotel.com  
http://RegalRiverside.com



#### Hyatt Regency Hong Kong, Sha Tin

Room type: Mountain view  
Price per room per night: HK \$850 + 10%

18 Chak Cheung Street, Shatin  
New Territories, Hong Kong  
Tel: (852) 3723 1234  
Fax: (852) 3723 1235  
Email: hongkong.shatin@hyatt.com  
http://www.hongkong.shatin.hyatt.com

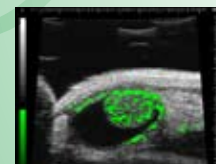
# Urology Symposium 2010

## Bladder Diseases – Benign & Malignant

Date : 18-19 December 2010

Venue : Prince of Wales Hospital, Hong Kong

Website : [www.hkmisc.org.hk/uro2010](http://www.hkmisc.org.hk/uro2010)



### Organizers :



Division of Urology  
Department of Surgery  
The Chinese University of Hong Kong



CUHK Jockey Club Minimally  
Invasive Surgical Skills Centre

#### 17 December 2010 (Friday) Venue: MISSC

1000-1600 Hands-on Laparoscopic / Single Port Animal Workshop

#### 18 December 2010 (Saturday) Venue: Shaw Auditorium

0830-0900	Registration	<b>1200-1240</b>	<b>Case Discussion – Controversies in Bladder Cancer Management</b>
0900-0920	Welcome Speech		
<b>0920-1020</b>	<b>Bladder Cancer (Part 1)</b>	<b>1240-1400</b>	<b>Olympus Lunch Symposium: Narrowband Imaging in Bladder Cancer</b>
0920-0935	Impact of Bladder Cancer - Worldwide and Local Perspective	<b>1400-1440</b>	<b>Keys to Success with Orthotopic Bladder Substitution</b>
0935-0950	Bladder Cancer Pathology	<b>1440-1600</b>	<b>Benign Bladder Conditions</b>
0950-1005	Urine Markers of Bladder Cancer	1440-1500	Overactive Bladder – The Perspective in Hong Kong
1005-1020	Role of Neo-adjuvant and Adjuvant Chemotherapies in Bladder Cancer	1500-1520	Medical and Surgical Therapies of Overactive Bladder
1020-1040	<i>Tea Break</i>	1520-1540	Ketamine Cystitis – A New Disease Entity?
<b>1040-1200</b>	<b>Bladder Cancer (Part 2)</b>	1540-1600	Multidisciplinary Approach to Ketamine Abuse / Ketamine Cystitis
1040-1100	Challenges in Management of high Risk NMIBC		
1100-1120	Nerve-sparing Radical Cystectomy – Indications and Technique	<b>1615-1715</b>	<b>Storz Urology Forum – Challenges and Difficulties Encountered in Next Generation Urologists</b>
1120-1200	Panel Discussion – Different Approaches of Radical cystectomy		

1. Open Radical Cystectomy
2. Laparoscopic Radical Cystectomy
3. Single-port Radical Cystectomy
4. Robotic Radical Cystectomy

**CME / CNE Accreditation**

#### 19 December 2010 (Sunday) Venue: Shaw Auditorium

0830	Registration
0900	
1000	<i>Tea Break</i>
1015	<b>Bladder Cancer (Part 3) – Interim presentation</b>
	1. Potency Preserving Cystectomy
	2. Role of Extended Lymphadenectomy in Radical Cystectomy
1200	<i>Lunch</i>
1330	
1400	3. Multidisciplinary Approach in Management of Urological Cancers
1420	
1500	
1515	Closing Remark

**Live Demonstration: Nerve-sparing Radical Cystectomy**

#### Registration Methods

1. Online Registration: <http://www.hkmisc.org.hk/uro2010>
2. By Fax, mail, or e-mail

Please complete the registration form and return it with appropriate fee to the Secretariat.